

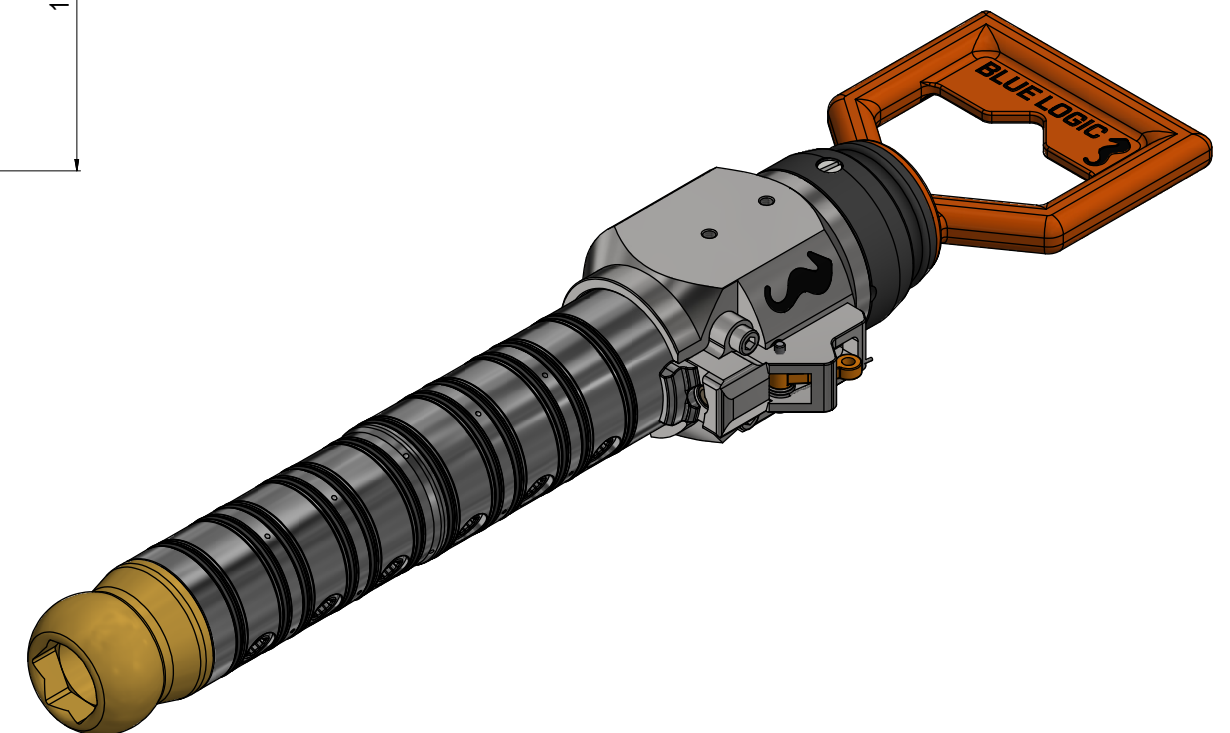
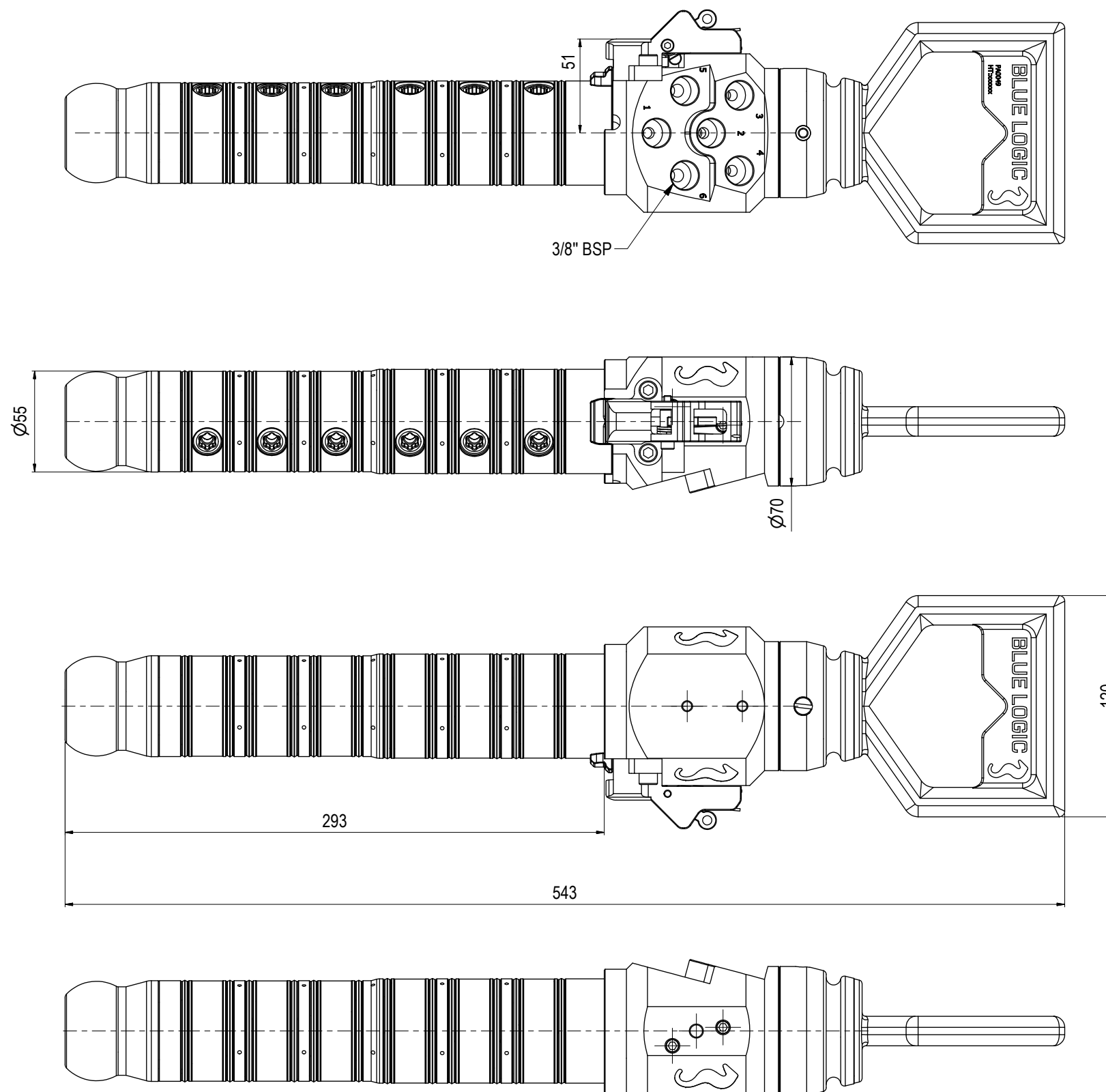
NOTE: 1
 DESIGN CODE:
 NS-EN 13445:2009 / ISO 13628-8

NOTE: 2
 TECHNICAL CLASSIFICATION:
 Article Type: 003-Valve Stabs
 Main Group: 3.07. Ø55/Ø57-Valvestab
 Intermediate Group: 3.42.01. Stab
 Sub Group: 3.42.102.6. Hexa

NOTE: 3
 INTERFACE INFORMATION:
 Pressure Rating Bar: 690
 Material: Long-term
 Weight: 9,2 kg
 Volume: 1,25 dm³
 Surface Area: 3500 cm²
 Hydraulic: 3/8" BSP
 Mechanical: D-Handle
 Electrical: N/A
 Com. & Protocol: N/A

NOTE: 4
 ADDITIONAL INFORMATION:
 Male Valve Stab with 6 individual hydraulic lines. Designed for short term submersion in intervention applications.
 This valve stab can be equipped with a key system and can only be inserted and mated with a receptacle with similar key.
 The Valve Stab hydraulic connection system is a pressure balanced hydraulic connector system with integrated ball valves in all ports on both the male and female side. Can be connected and disconnected with full system pressure, water ingress and pollution to sea during connection and disconnection is negligible.
 For more information - request usermanual 600142-TD-0001.

NOTE: 5
 SPAREPARTS:
<http://e-sea.bluelogic.no/main.aspx?page=article&artno=BB1053>



23	1.10.2024	9-IFU (Issued for Use)		WTJ	HNJ	WTJ
22	9.10.2023	9-IFU (Issued for Use)		WTJ	LGH	WTJ
21	12.9.2023	9-IFU (Issued for Use)		WTJ	LGH	WTJ
20	31.5.2023	9-IFU (Issued for Use)		WTJ	LGH	WTJ
Rev.	Date	Reason for issue	Revision change	Made	Chk'd	Appr.

BLUE LOGIC

Dwg Scale:
 NTS
 Dwg Proj:
 Dwg Format:
 A3

Drawing title:
 Ø55/Ø57 HP VStab 10K Long-term BSP 3/8" Double Seal

Drawing number:
 BA7469

Rev:
 23